

Wanderung (655 Höhenmeter)
camminata (dislivello: 655 m)
hike (vertical gain: 655 m)

Flug (Mindestgleiten: 1:7)
volo (efficienza necessaria: 1:7)
flight (minimum gliding ratio: 1:7)


Endspurt
sprint finale
final sprint

Hochspannungsleitung
linea alta tensione
high voltage power line



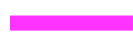
Boè




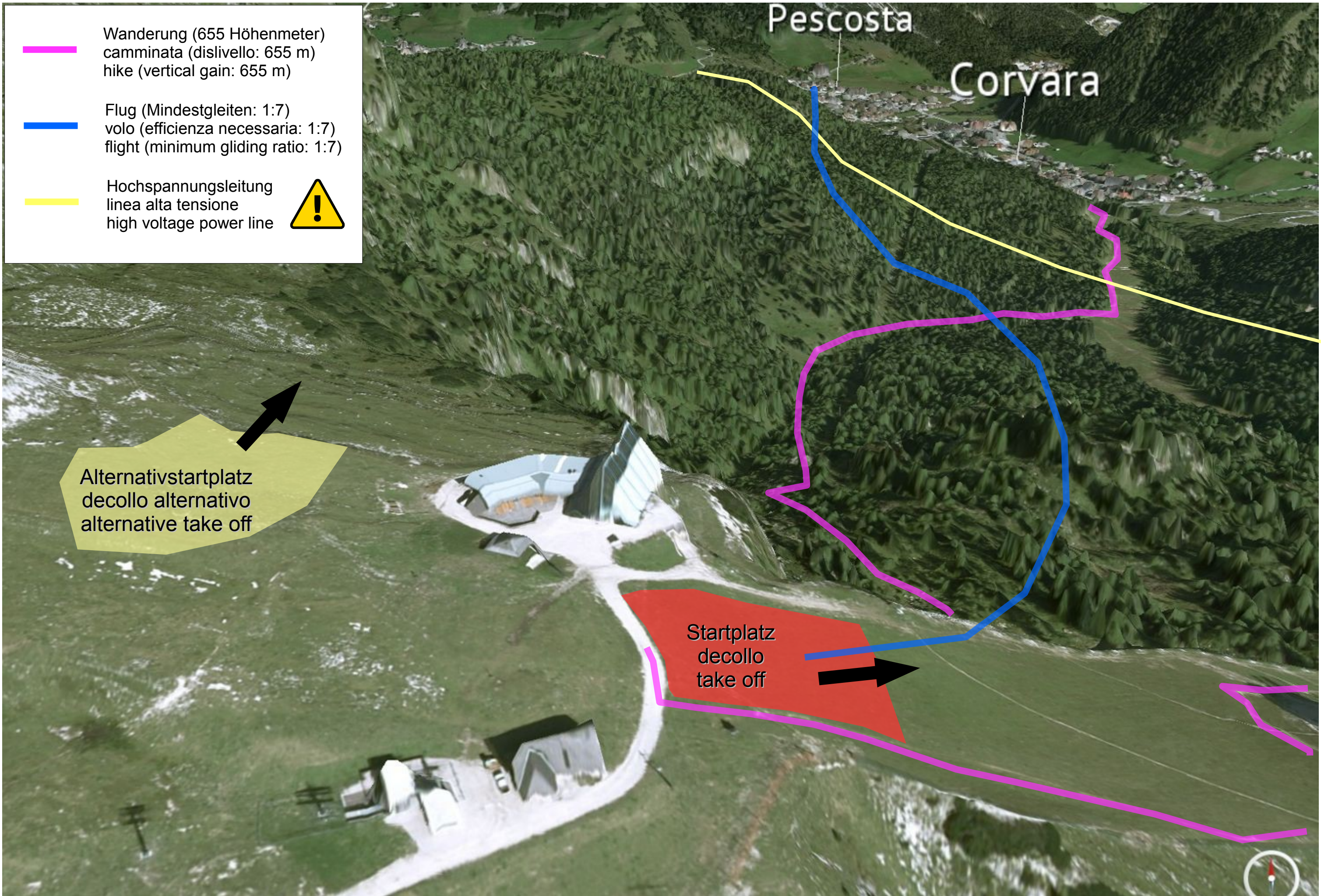
An aerial photograph of a residential area with a green highlighted rectangular area labeled 'Landewiese area atterraggio landing area'. A blue circle marks the 'Start- und Ziellinie partenza ed arrivo start & finish' at a road intersection. A pink line represents a hike route, and a red line represents a final sprint. A blue 'P' icon is located on a road to the right.

Landewiese
area atterraggio
landing area

Start- und Ziellinie
partenza ed arrivo
start & finish

 Wanderung (655 Höhenmeter)
camminata (dislivello: 655 m)
hike (vertical gain: 655 m)

 Endspurt
sprint finale
final sprint



Wanderung (655 Höhenmeter)
camminata (dislivello: 655 m)
hike (vertical gain: 655 m)

Flug (Mindestgleiten: 1:7)
volo (efficienza necessaria: 1:7)
flight (minimum gliding ratio: 1:7)

Hochspannungsleitung
linea alta tensione
high voltage power line



Pescosta

Corvara

Alternativstartplatz
decollo alternativo
alternative take off

Startplatz
decollo
take off

